



R-DH-SB

Die Handler Split Battery



Specs



Material Handling Solutions made in the USA



PERFORMANCE FEATURES

A REPUTATION OF EXCELLENCE

RICO's die handlers provide the fastest and most efficient method for quick die change. RICO has built a reputation by building reliable lift trucks that get the job done in the best possible way. On the R-DH-FP series, every feature is matched by serviceability and excellence in design.



OPERATOR CONTROLS

All instruments are located within clear view of the operator and the ergonomically-designed control lever is within easy reach.



DRIVE MOTOR CONTROL

The Transistor (MOSFET) controller is microprocessor controlled. It's on-board service diagnostic capabilities provide many benefits such as maximum energy efficiency, reduced maintenance and infinite speed control capability.

HYDRAULIC SYSTEM

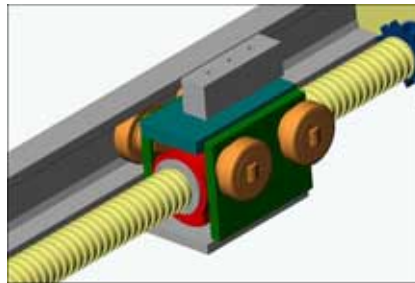
Heavy duty motor and gear pump provide sufficient power to lift even the largest loads and manual hydraulic valve allows for infinitely variable control for lift and lower.

Overload valves are set to prevent lift when system reaches maximum pressure or when load exceeds rated capacity.



PUSHER MECHANISM

The heavy duty pusher mechanisms enable the die to be pushed completely off the die table and into the press. A notch in the back of the mechanism allows chains to be fastened around the die and pulled out with the pusher mechanism.



BALL NUT ASSEMBLY

The ball nut assembly is located under the die table and is responsible for pusher movement. Heavy duty bearings with embedded side thrust rollers provide stability even when pushing large dies.



HYDRAULIC MOTOR

Heavy duty hydraulic motors create the force necessary to power the ball screw which in turn powers the ball nut assembly and pusher mechanism. Both screws can be coupled using roller chain to ensure symmetric pusher movement.

CHASSIS

The chassis consists of a heavy duty, all welded frame using A-36 plate and structural steels.

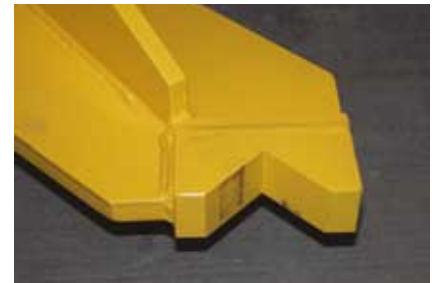
DIE ROLLERS

The die table can be equipped with die rollers which reduce friction when loading and unloading dies from presses or racks.



DOCKING V

Docking V's welded to front of the chassis provide easy alignment of the die truck with presses or racks that are equipped with docking pins.



DRIVE UNIT

Dual planetary drive units couple the motor and gear reduction within the drive wheel to maximize torque.



TECHNICAL SPECIFICATIONS

R-DH-SB RIDER DIE HANDLER - SPLIT BATTERY			
1	Lifting Capacity	25,000 - 300,000 lbs	11,340 - 136,000 kg
2	Total Lift	To Requirements	To Requirements
3	Voltage	72 VDC	72 VDC
4	Die Table Length	To Requirements	To Requirements
5	Die Table Width	To Requirements	To Requirements
6	Travel Controls	GE SCR	GE SCR
7	Steering	Power Automotive	Power Automotive
8	Battery Compartment	(2) 18-1/2" x 39"	(2) 469 x 990 mm
10	Drive Tire	(2) 28" x 14" Poly	(2) 711 x 355 mm
11	Load Wheels	Based on Capacity	Based on Capacity
13	Travel Speed Empty (Approximate)	5.1 mph	8.2 km/h
14	Travel Speed Loaded (Approximate)	4.0 mph	6.4 km/h
15	BDI / Hour meter w/ lift interrupt	Standard	Standard

AVAILABLE OPTIONS	DESCRIPTION
LPG Gas	LPG gas powered w/internal combustion engine.
Strobe Light	The optional Strobe light ensures safety by alerting pedestrians of the vehicles operation.
Backup Alarm	The optional Backup Alarm warns pedestrians that the vehicle is traveling in reverse.
Pushers	Individual control of pusher bollards.



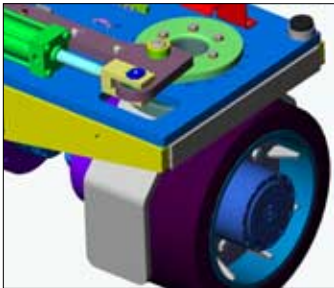
Dimensions and performance data given may vary due to manufacturing tolerances. Performance is based on an average size vehicle and is affected by weight, condition of truck, how it is equipped and the conditions of the operating area. RICO products and specifications are subject to change without notice.

COMPANY BACKGROUND

The RICO Advantage . . .

RICO is proud to be one of few companies to be totally self sufficient in the Design, Fabrication and Assembly of its product. We do everything from steel plate burning down to the final painting and almost everything in between! This eliminates dependency on outside sources since 95% of the work is performed in house. That translates into:

- * Quicker Product Deliveries
- * Faster Response to Design Opportunities
- * Increased Equipment Reliability
- * Flexible Production Schedules
- * High Quality Standards
- * Highest Level of Technical Support



The RICO Sales and Engineering Departments . . .

RICO is committed to designing the most dependable application-designed lift trucks in the market today. Our sales department constantly thinks outside of the box, allowing us to look at your needs from a fresh perspective.

Our Engineering staff combines quality, durability and cost effectiveness, resulting in a vehicle that will surpass your requirements. We know you'll be pleased with your vehicle, because you will be an integral part of the design process. We assist local dealers as part of the proposal process to be sure we are addressing all of your operational, safety and performance issues.

Our designs are generated in house using the leading mainstream 3D CAD solution, Solidworks-2001. This allows us to evaluate more design alternatives, reduce errors, and enhance product quality.

About RICO Equipment, Inc . . .

RICO is the world's leading producer of specially engineered material handling equipment. With more than 125 years of experience in this industry, RICO has pioneered the design, development, and manufacture of material handling equipment with carrying capacities ranging from 3,000 LBS. to 300,000 LBS. The company's products are sold to a diverse customer base, which includes users in the industrial, commercial, and military markets. Headquartered in Medina, Ohio, RICO has manufacturing facilities in Ohio, and West Virginia.

RICO is a family owned, privately-held company. The company was originally founded by industry leader Boyd Ross after successfully completing the startup of Schreck Industries. Today, RICO is managed by Boyd's son-in law David Mueller and his son Michael Ross.



BPR/RICO Equipment, Inc.
120 North State Rd. Medina, OH 44256
Phone: 330-723-4050 Fax: 330-723-4012
www.RicoEquipment.com